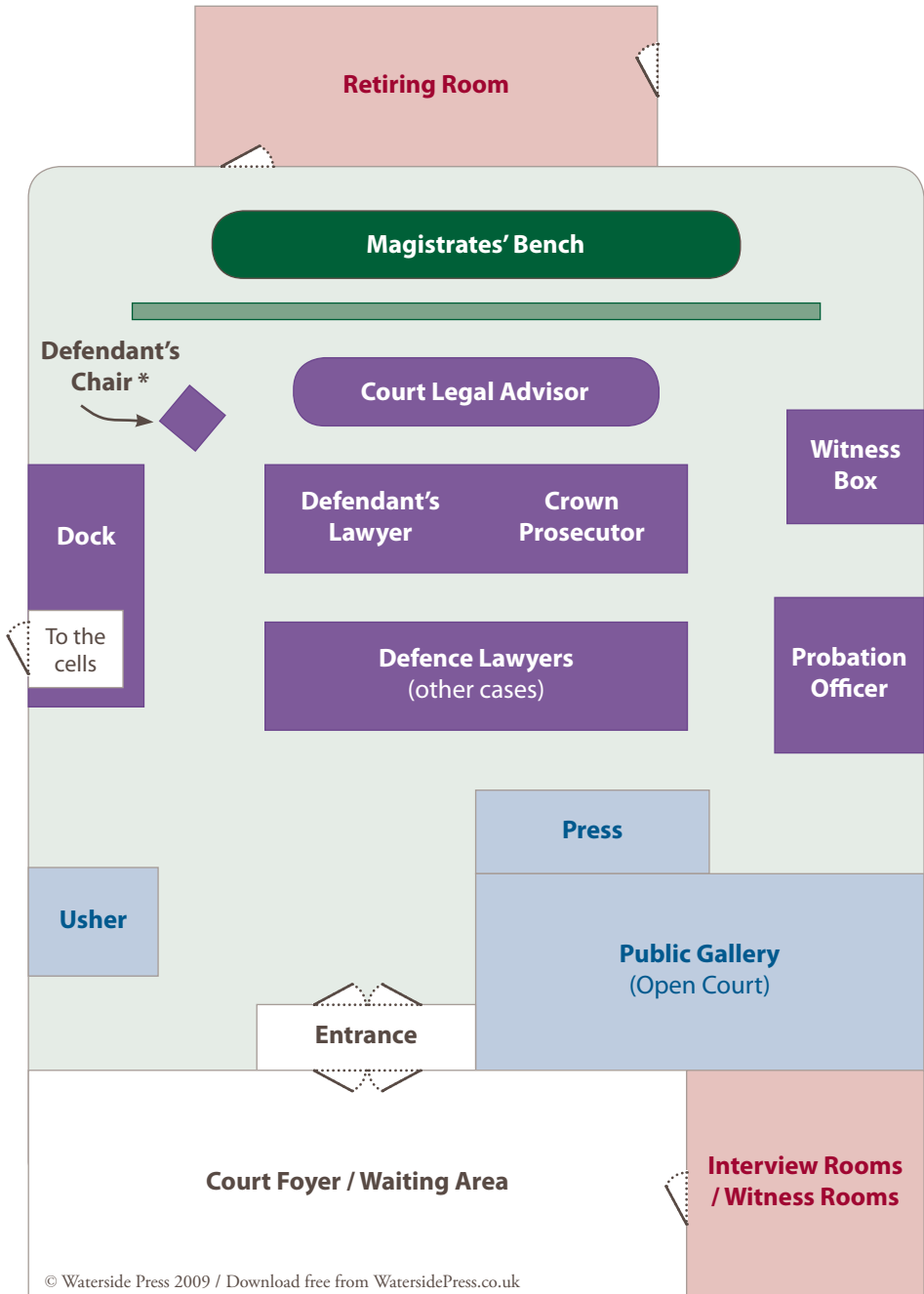


Magistrates' Court diagrams

- A Typical Magistrates' Court Layout
- The Courts Hierarchy in Outline
- The Sentencing Framework in Outline



Example of a courtroom layout

* Use of the dock or a chair for the defendant can vary: see *Dock* in the *Glossary*
A less formal arrangement is likely re youth or family work, *Chapters 8 and 9*

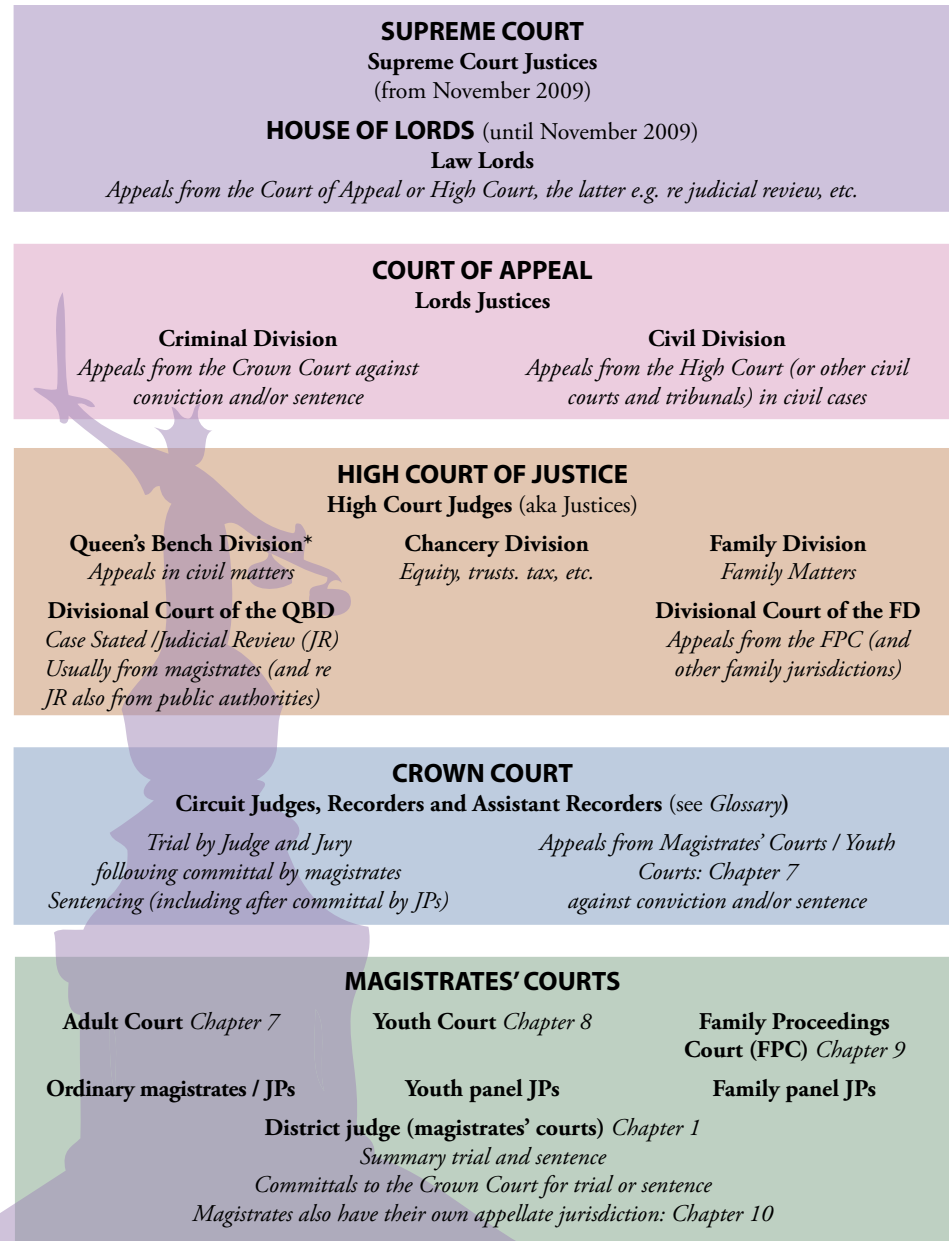


Figure 1: The courts hierarchy in outline

*The QBD also has its own 'first instance' jurisdiction (see *Glossary*) as well as a Commercial Court and Admiralty Court. There is also a local county court (including for civil and family cases). There is a freestanding right of appeal to the European Court of Human Rights: *Chapter 5*

SENTENCING OF OFFENDERS AGED 18 YEARS AND OVER

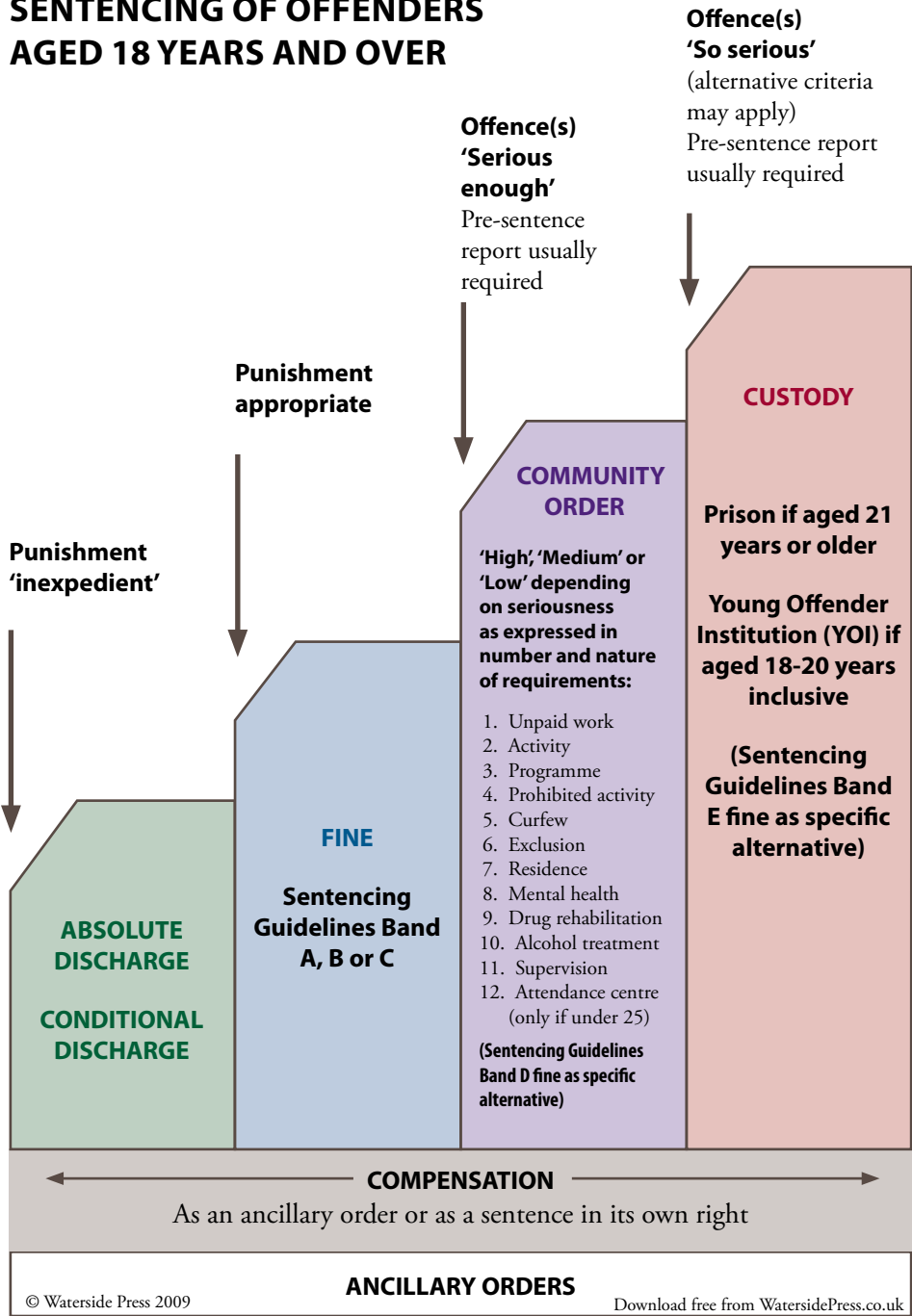


Figure 1: The Sentencing Framework in outline

simple speedy summaries

If you found these diagrams helpful, or you would like to know more about magistrates courts, the book they are taken from is *The Magistrates' Court: An Introduction* by Bryan Gibson.

5th Edition
May 2009
192 pages
ISBN 9781904380528

- A unique handbook
- Consistently rated excellent by reviewers
- Especially useful for newcomers to the topic

Order your copy from
WatersidePress.co.uk

